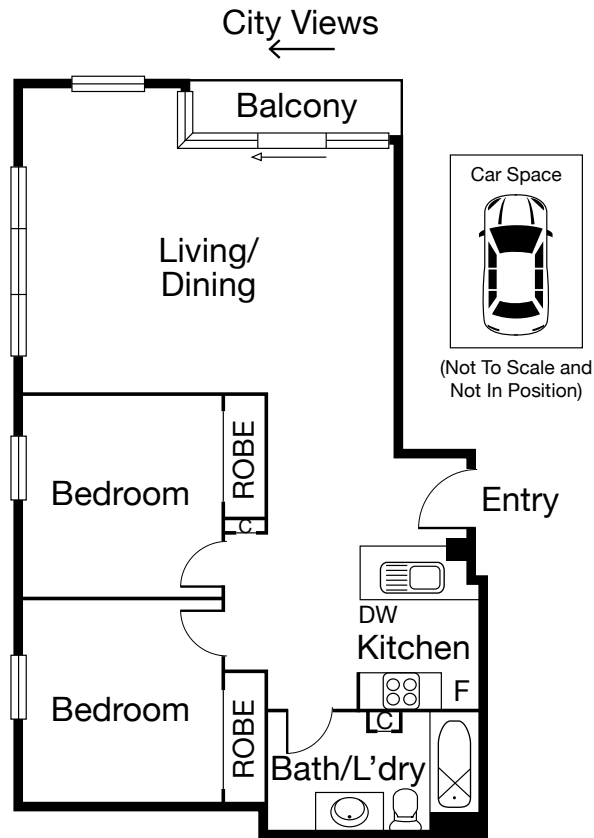


MELBOURNE 88/416 St Kilda Road



**CAYZER**

# MELBOURNE 88/416 St Kilda Road



## CITY CONDOS — OPPOSITE BOTANICAL GARDENS

- Outstanding views to Botanical Gardens, CBD skyline
- Spacious and well-presented
- Conveniently located on St Kilda Road.

Positioned on the eighth floor, this two-bedroom corner apartment is bathed in natural light. Enter to an appointed modern kitchen with breakfast bar, expansive dining and living to balcony with brilliant views, two great sized bedrooms (each with built-in robes) and central bathroom.

Features: Secure undercover car space, secure intercom entry, resort style indoor swimming pool, tennis court, gymnasium and BBQ area.

🛏️ 2 🚿 1 🚗 1		
<b>FOR SALE</b>		
<b>Inspection</b>	As advertised or by appointment	
<b>Contact</b>	Michael Szulc	0417 122 809
	Jason De Stefano	0413 292 666
<b>Mel Ref</b>	57 K1	
<b>Website</b>	416stkildaroadmelbourne.com	



Interactive Floorplan

# CAYZER

Albert Park 330 Montague Street 03 9699 5999  
Port Melbourne 370 Bay Street 03 9646 0812

[cayzer.com.au](http://cayzer.com.au)